

# Vuk'uzenzele



Produced by Government Communications (GCIS)

English/Tshivenda

| Phando 2019

## NSFAS ready to fund students in 2019



■ NSFAS will communicate with qualifying students, once 2018 academic results have been made available.

**THE NATIONAL STUDENT** Financial Aid Scheme (NSFAS) received over 400 000 applications for 2019.

**H**igher Education and Training Minister Naledi Pandor says the National Student Financial Aid Scheme (NSFAS) is ready to fund qualifying students for the 2019 academic year.

Minister Pandor made the announcement during a media briefing held in Cape Town recently.

In 2018, NSFAS disbursed loans and bursaries to the tune of R22 billion for 659 000 beneficiaries which included 371 368 university students and 288 341 TVET colleges.

"This amount is expect-

ed to increase [in 2019] to approximately R32 billion, which is estimated to fund about 400 920 TVET colleges students and 377 050 University students," said Minister Pandor.

She said NSFAS will communicate to students who meet the financial eligibility criteria and have received an academic offer via SMS and email at the beginning of this month. This will be done once academic results have been made available to NSFAS.

Pandor said the scheme was in the process of evaluating all applications received. The evaluations

process checks whether applicants are eligible for funding by verifying all data received by students with third parties like the SA Revenue Service and Home Affairs.

"To qualify for funding a student must meet the financial eligibility criteria and register at an institution for an approved programme. Successful students will receive bursary funding to cover their tuition fee for their registered programme and an allowance for learning materials. They may also qualify for subsidised accommodation and transport allowances

where applicable," she said.

She said funding is only confirmed once a student has met the financial eligibility criteria and is formally registered at a public TVET college or university for an approved funded programme.

### Smooth application process

Pandor added that the 2019 application cycle has proceeded relatively smoothly with more than 400 000 applications received between the opening of applications on the 3 September and the

● **Cont. on page 2**



**Choosing the best early care for your child**

**Page 7**



**Government to abolish work experience for entry posts**

**Page 9**



**ALSO AVAILABLE ON:**



@VukuzenzeleNews

Vuk'uzenzele

Websites: [www.gcis.gov.za](http://www.gcis.gov.za)

[www.vukuzenzele.gov.za](http://www.vukuzenzele.gov.za)

E-mail: [vukuzenzele@gcis.gov.za](mailto:vukuzenzele@gcis.gov.za)

Tel: (+27) 12 473 0353

**Free Copy**

# A vha ite khumbelo dza zwickhala zwickoloni nga tshifhinga

**VHABEBI VHA TEA** u khwathisedza uri vha wana tshikolo tsha vhana vhavho ho sala n'waha phanda ha musii vhana vha tshi swikelela u ya tshikoloni.

**M**athomoni a n'waha, vhagudiswa vho takalaho u mona na lifhasi vha thoma d'uvha lavho la mathomo la n'waha wa tshikolo.

Naho zwo ralo, hu na vhanzhi vhane vha nga si kone u kovhelana dakalo lavho

n'waha wa 2019 wo no fhela. Muambeli wa Muhasho wa Pfunzo dza Fhasi Vho Elijah Mhlanga vho ri vhabebi vha tea u dzulela u d'iwalisela zwickhala zwa vhana zwa tshikolo musii ho sala n'waha phanda ha musii vha tshi lugela u thoma tshikolo.

"Vhabebi vha tea u ita khumbelo ya zwickhala kha themo ya u thoma, vhunga d'uvha la u fhedzisa la khumbelo li tshi dzulela u vha d'uvha la u fhedzisa la themo. Mushumo wa u t'anganedza u thoma mathomoni a themo ya vhuvhili nga Lambamai wa bvela phanda u swika nga Khubvumedzi. N'waha mu'we na mu'we, u t'anganedzwa ha vhana u itela n'waha u d'aho zwi tea u fhedzwa vhukati ha n'wedzi wa Tshimedzi na Lara.

Zwi dovha hafhu zwa vha zwa ndeme uri vhabebi vha ite khumbelo kha zwickoloni zwo vhalaho, u itela u engedza zwickhala zwa uri vhana vhavho vha t'anganedzwe.

"Vhabebi vha tea u sedza mad'uvha a u fhedzisa u d'iwalisela a mavundu avho, vhunga hezwi zwi tshi nga fhambana zwi t'uku u ya nga



mavundu." Vho Mhlanga vho tsivhudza.

Vho engedza ngauri Ndayotewa ya Afrika Tshipembe i amba uri vhana vho t'he vha mi'waha ya vhukati ha ya 7 na 15 vha tea u dzhena tshikolo, zwine zwa n'ea muhasho fhu d'ifhinduleli ha uri vhana vho t'he vho t'anganedzwa zwickoloni.

Vho Mhlanga vho ri vhabebi vhane a vho ngo wana zwickhala vha tea u kwamana na ofisi dza pfunzo kha vundu kana dza tsh'iriki.

"Vhabebi vha khou t'utu-wedzwa u kwamana na ofisi dza tsh'iriki u itela thuso kha u t'anganedzwa ha vhagudiswa. Zwi vha n'ea tshikhala tsha u nwalisa

vhana kha zwi'we zwickoloni kha henetsho tsh'iriki zwine zwa vha na zwickhala zwa u nga t'anganedza vhana."

Zwa zwino hu na ofisi dza zwi t'iriki dzine dza pa da 70 kha mavundu a t'he.

Zwidodombedzwa zwine zwa t'odea musii hu tshi itwa khumbelo ya n'wana zwi katela:

- T'hanziela ya mabebo
- Khadi ya u haelwa
- Khadi ya u pfuluswa kana ripoto ya mugudiswa ane o no vhuya a ya tshikoloni.

U itela thuso, vhabebi vha nga kwama vhadzudza-nyi vha u t'anganedzwa ha vhagudiswa kha henetsho tsh'iriki tsha vundu. **V**

Vhukwamani kha Mavundu  
Kapa Vhubva d'uvha: Vho HN  
Buhlungu  
040 608 4442 |  
083 361 9464  
nobom.buhlungu@edu.  
ecprov.gov.za

Free State: Vho Thloriso  
Motholo  
051 447 4038 | 079 503 5955  
ThlorisoMotholo@gmail.  
com

Gauteng: Vho Sybil Paddy  
011 355 0656 |  
082 927 9584  
Sybil.Paddy@gauteng.gov.  
za

KwaZulu-Natal: Vho -Sbu  
Kheswa  
033 348 6115 |  
082 922 4046  
Sbu.kheswa@kzndoe.gov.za

Limpopo: Vho M Mulaudzi  
015 290 9441 |  
079 511 8494  
mulaudia@yahoo.co.uk

Devhula ha Kapa: Vho ABF  
Malunga  
053 839 6808 |  
083 736 7077  
abfmalunga@gmail.com

Devhula Vhukovhela: Vho  
Dokotela M Teu  
018 397 3097 |  
079 515 6269 mteu@nwpg.  
gov.za

Mpumalanga: Vho BC  
Nkwini 013 766 0940 |  
061 358 0200  
b.nkwini@education.mpu.  
gov.za

Kapa Vhukovhela: Vho L R  
Abrahams 021 467 2364 |  
082 654 2131 Lance.Abraha-  
ms@westerncape.gov.za

ngauri vhabebi vho nwalisa vhana vhavho u lenga nahone vha khou humiselwa murahu nga zwickoloni zwine zwo dala.

Mushumo wa u n'ea vhana zwickhala zwickoloni u itela

## ● From page 1

closing of applications on the 3 December 2018.

She said on average, NSFAS received more than 3 200 applications a day over the period from September to December, with the number reaching as high as 30 000 on one of the days.

Out of all the applications, 63 percent were females while males made up 37

percent of the applications.

A total of 34 413 applications were received from social grant beneficiaries. Students who are beneficiaries of the South Africa Social Security Agency (SASSA) grant, automatically qualify in terms of the financial qualification criteria and will be funded if admitted and registered at a TVET college or university.

"However, it is a concern

that only 24 percent of the applications are from learners who wish to enrol at TVET colleges, with the balance of 88 percent being applications for universities," the Minister said.

Pandor said of all the applications, the highest number, 95 523, was received from the KwaZulu-Natal province. The number represents 45 percent of the total number

of learners that wrote their National Senior Certificate in the province, while the lowest number was from the Northern Cape with 2 573 applications.

She said the success of the current application process can be attributed to a number of factors – including the revised and easy-to-complete online application system, which allowed

applicants to complete an application within five minutes; the simplicity of the on-line and manual form with fewer fields to fill; and the accessibility of NSFAS where applicants have been able to apply at the National Youth Development Agency (NYDA) as a result of the scheme's long-standing partnership with the agency. **V** [SAnews.gov.za](http://SAnews.gov.za)



government  
communications

Department:  
Government Communication and Information System  
REPUBLIC OF SOUTH AFRICA

Tel: (+27) 12 473 0089

E-mail: [vukuzenzele@gcis.gov.za](mailto:vukuzenzele@gcis.gov.za)

Address: Private Bag X745, Pretoria, 0001

Head of Editorial and Production  
Tasneem Carrim | [tasneem@gcis.gov.za](mailto:tasneem@gcis.gov.za)

Editor-in-Chief  
Roze Moodley | [roze@gcis.gov.za](mailto:roze@gcis.gov.za)

Managing Editor  
Ongezwa Mogotsi  
[ongezwa@gcis.gov.za](mailto:ongezwa@gcis.gov.za)

News Editor  
Noluthando Motswai

Writers  
More Matshediso  
Jauhara Khan

Senior Designer  
Tendai Gonese

Language Practitioners

Nomgcibelo Motha  
Boitumelo Phalatse  
Phakamani Dadlana

Vukuzenzele  
is published by Government  
Communications (GCIS)

Printed by: pearlaidset

All rights reserved. Reproduction of the newspaper in whole or in part without written permission is strictly prohibited.

Distributed by: ON THE DOT

# Zwiḽiwa zwa Afrika zwi na mutakalo

**MUḽIVHI WA ZWA KUḽELE** o ṅwaliswaho Vho Mpho Tshukudu vha tenda zwauri thaidzo dza u vha na mivhili kha vhathu dzi ḽo tandululea nga dzone dzine musi vhathu vha tshi fulufhela vhuḽali ha vhomakhulukuku, vha lugisa zwiḽiwa zwavho nga u ongolowa na u zwi ḽa na vhathu vhane vha vha funa.

Allison Cooper

**N**ga murahu ha miṅwa-ha minzhi ya u tambula nga zwigwada zwa tsumbadwadze ḽa u zwimbelwa na dzialedzhi dza zwiḽiwa, Vho Tshukudu vho ḽo sedzulusa zwavhuḽi kuḽele kwo ḽisendekaho nga mvelele ya Yuropa na Ingilandi.

“Ndo limuwa zwauri, u fana na ṅṅe, vhunzhi ha kiḽante dzanga ndi vhadzulapo

vhathu-vho,” Vho amba.

Vho Tshukudu vho guda uri zwiḽiwa zwa Afrika zwi na mutakalo na muthetshelo wavhuḽi na zwauri phindulo ye ra vha ri khou ḽoḽana nayo u tandulula thaidzo ya zwa mutakalo i tou vha hanefha phanḽa hashu. “Ro vha ri tshi ḽa zwiḽiwa zwo tou zwimiwaho, zwa mupo, zwa sialala, zwi si na gluten, miroho, zwi re na GI na GL ya fhasi, zwo bikwaho nga u ongolowa, zwa dzikhalanwaha, zwi sa fheliho nga u ḽavhanya, zwi fushiwaho nga mahatsi, zwi songo engedzedzwa-ho dzihomounu u itela mirafho,” vho amba.

M u s i  
v h a

sialala na vhufa na maitete a zwiḽiwa, nda kona u vhona uri zwiḽiwa zwa Afrika zwi na mutakalo, zwi na GI ya fhasi, ndi zwa mupo, a zwo ngo engedzedzwa zwinwe zwithu na u sa vha na gluten nahone zwi nga shumisiwa u langa kutshilele kwavhuḽi kwa mutakalo,” vho ralo.

U humela murahu kha vhubvo ha havho ha kuḽele kwa mutakalo zwi na zwivhuya zwinzhi, hu tshi katelwa na uri zwiḽiwa zwi wanala u leluwa nahone zwi vhulunga masheleni. “Zwiḽiwa zwi aluwa u leluwa kha mashango haya ngauri ndi zwa mupo nahone zwo ḽowela kilima na mavu o nonelaho,” ho amba Vho Tshukudu.

“Zwiḽiwa zwine zwa wanala hune vha vha hone zwi na pfushi nahone tshinwe tshifhinga zwi vha na muthetshelo wa khwine na mutakalo musi zwi tshi vhambedzwa na zwiḽiwa zwine zwa rengwa mavhengeleni zwine zwa vha zwo bviswa faiba, pfushi na dzimineraḽa nahone zwo ḽala swigiri, muṅo na mapfura a si na mutakalo.”

## Kha vha dzhie ndango ya kuḽele kwavho

Vho Tshukudu vho ḽalutshe-dza uri zwine zwa khou itisa uri MaAfrika Tshipembe vha vhe na mivhili yo kalulaho na nyaluwo ya malwadze a kutshilele ndi uri vhunzhi ha vhathu vha renga zwiḽiwa zwine zwi dzula zwo bikwa na zwiḽiwa zwa mavhengeleni, a vha iti nyonyoloso yo linganaho, nahone a vho ngo ḽidzhenisa kha vhubveledzi ha zwiḽiwa ngauralo vha fhedza vha si tsha ḽibikela zwiḽiwa.

“Ri baḽekanya zwiḽiwa zwa mahayani na vhushai. Fhedzi, ngauri zwiḽiwa ‘zwiswa’ a si zwone zwine zwa vha na muthetshelo une ra u takalela nahone zwi shaya pfushi, ri

fhedzisela ri tshi vho ḽa lwo kalulaho musi ri khou itela uri ri fure,” vho ralo.

Kha vha dzhie ndango ya kuḽele kwavho nahone vha vhuvelele kha zwiḽiwa zwo ḽalaho pfushi: Vho Tshukudu vha na tsivhudzo dzi tevhelaho kha MaAfrika Tshipembe:

- Kha vha dzhie ndango ya zwine vha ḽa.
- Kha vha takalele zwiḽiwa zwapo.
- Kha vha gudise vhana nga ha vhufa ha zwiḽiwa zwavho na zwa tshikale zwi elanaho na zwiḽiwa

■ Kha vha thome ngade ḽhukhu uri vha ḽilimele zwiḽiwa.

“Zwiḽiwa zwo limiwaho mahayani ndi zwitete u fhirisa zwine zwa rengwa mavhengeleni; ngade dza mahayani a dzi shumisesi dzikhemikhaḽa, dzi no fana na mishonga ya u vhu-laha zwikhokhonono; nahone u lima ngadeni ndi dzilafho, ndi maitete a nyonyoloso, i thusa u ita uri miḽa i farane nahone i ḽuḽuwedza uri vha-na vha ḽivhe vhubvo ha zwiḽi-wa,” vho ralo.

## Mihumbulo ya Zwikhafuthini (mufaro)

Musi vha tshi panga zwiḽi-wa kha tshikhafuthini, Vho Tshukudu vha dzinginya uri miroho, zwihulu miro-

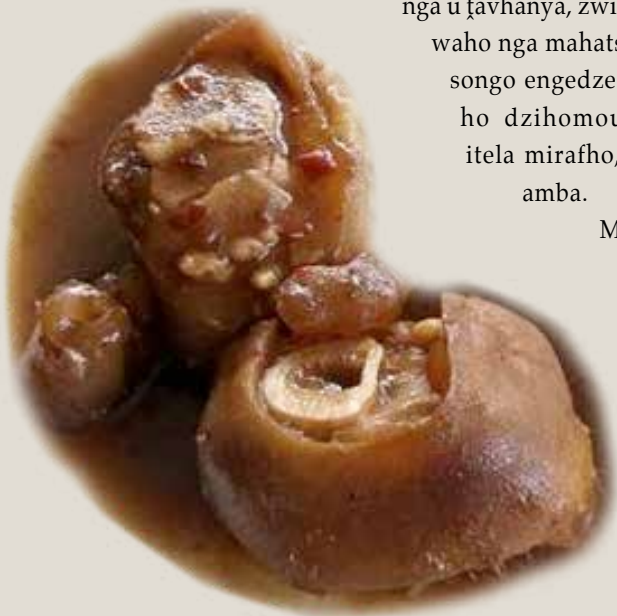
ho ya sialala i na pfushi u fhirisa tshipinishi nahone i aluwa hu si na vhuleme kha vhuḽo ha mahayani. Vha nga tou engedza mutshelo, zwihulu ya vhufa na sialala i fanaho na thebeila na mahuyu; na ṅduhu mbisi, na phonḽa, mafula na thebvu. Vha nga zwi bika na ṅduhu. Tsumbo, vhuswa ha makhaha; muroho wo bikiwa na ṅduhu kana phinathibatha; na tshidzimba, ṅduhu na phonḽa na khavhishi.

## Ri khou lalela mini?

Vho Tshukudu vha khou kwengweledza uri vhathu vha dzhiele nzhele ṅawa ngauri dzi ita tshisevho tshavhuḽi vhuria nahone dzi nga engedzwa kha dzisaladi kana vha ḽanganyisa na tshidzimba. Dzi nga dovha hafhu dza shumiswa u ita dzibega nahone dzo pfuma phurotheini, faiba na mineraḽa.

Vho dovha hafhu vha themendela ṅama ya miraḽo ya nga ngomu ya zwifuwo (mala, mbilu, zwikhwikhwi, magulu na gwanḽa), zwine zwo pfuma phurotheini nahone a zwi ḽuri; hu tshi katelwa na maḽabula, murambo, (amadumbe), na mafhuri kha zwiḽiwa zwavho.

“Vha songo shela swigiri kha murambo na mafhuri nahone vha ḽe na lukanda arali zwi tshi konadzea,” vho ralo. **V**



vha Afrika Tshipembe vha vharema vhane vha shuma zwavhuḽi nahone ndi murafho wa u thoma une wa vha na vhuḽwadze ha kutshilele. Musi ri tshi ḽutshela vhufa hashu ra ḽi dzhenisa kha zwa tshikhuwa na kutshilele kwa dziḽoroboni, hu tshi katelwa na zwine ra bika ra ḽa, ri ḽelwa nga mivhili.”

Vho ri vhunzhi ha kiḽante dzavho vho ḽaḽhuvhiwa ha wanwa uri vha na malwadze a kutshilele a no fana na vhuḽwadze ha swigiri, mutsiko muhulu wa malofha na mapfura a thumbuni (mukhavha).

“Zwo ḽa zwa nkwama. Arali ri zwine ra ḽa zwone, arali ra thudzela kule vuhone ha muthetshelo wa miḽani yashu, zwi amba uri ri vha vhaṅwe

tshi khou guda nga ha mishonga i no lwa na midzi ya vhuḽwadze, vho ḽuḽuwedzea u ṅwala bugu, Eat Ting, ine ya topola midzi ya tshivhanga tsha malwadze nahone vha shumisa zwidodombedzwa zwo khetheaho zwa kuḽele u lafha kana u langa malwadze.

“Zwiḽiwa zwine zwa dzulela u ambiwa nga hazwo ndi zwa Amerika, Tshaina na Yuropa. Ndo vha ndi khou ḽoḽa u thoma u shumisa zwiḽirathedzhi musi ndi khou lafha vhalwadze vhanganda dzhia ḽiga ḽa u ḽoḽisisa nga ha zwiḽiwa zwine zwa wanala Tshipembe ha Afrika zwine zwa vha na pfushi na mutakalo. Ndo guda zwinzhi kha vhalwadze vha vhaaluwa na miḽa nga ha zwiḽiwa zwa

