

Vuk'uzenzele



Produced by Government Communications (GCIS)

English/Setswana

| April 2017 Edition 1

Phakisa !! Phakisa !



Smallholder farmers are expected to play a major role in the implementation of Operation Phakisa for Agriculture, Land Reform and Rural Development.

Noluthando Motswai

President Jacob Zuma launched Operation Phakisa on Agriculture, Land Reform and Rural Development in Pretoria recently.

The central theme for Operation Phakisa for Agriculture, Land Reform and Rural Development is "Transforming the Agricultural Sector towards an Inclusive Rural Economy."

President Jacob Zuma said

it captures critical elements of government's socio-economic blueprint, the National Development Plan, and the 2017-2019 roadmap for radical economic transformation.

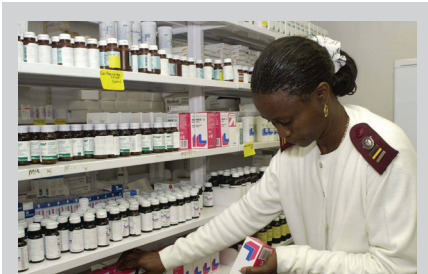
The President said land

FAST FACTS

- Phakisa is a seSotho word which means "hurry up".
- Operation Phakisa, the Big Fast Results Methodology was launched in 2011.
- It was adapted from a successful programme used in Malaysia.

reform is a central pillar of the radical economic transformation programme. "If we do not radically change the patterns of land ownership, control and management in South Africa we will be creating problems for ourselves in future. We need to take bold steps that will transform our economy, including land ownership, very fast."

It is partly because of the urgency of transforming South African society that the Agriculture and Land Reform Operation Phakisa was launched. ■



KZN patients get easy access to medication

Page 4



Growing township businesses

Page 8



ALSO AVAILABLE ON:



@VukuzenzeleNews

f Vuk'uzenzele

Websites: www.gcis.gov.za

www.vukuzenzele.gov.za

E-mail: vukuzenzele@gcis.gov.za

Tel: (+27) 12 473 0179

Free Copy

Rural economies' obstacles, solutions examined

Noluthando Motswai

Head of the launch of the Operation Phakisa on Agriculture, Land Reform and Rural Development in February 161 people worked

in labs to understand the obstacles and solutions to greater inclusivity for rural economies, and growth in the agricultural sector. President Zuma explained this at the launch.

The President said the

deliberations of the lab participants were organised according to seven work streams: land reform; producer support; livestock; grains; horticulture; labour, and rural development.

Insights flow from work

streams

"The land reform work stream, for instance, has identified the establishment of District Land Reform Delivery Centres; fast tracking

● **Cont. page 2**

Centenary celebration of Oliver Tambo

"Comrades, you might think that it is very difficult to wage a liberation struggle.

Wait until you are in power. I might be dead by then. At that stage, you will realise that it is actually more difficult to keep the power than to wage a liberation war. People will be expecting a lot of services from you. You will have to satisfy the various demands of the masses of our people. In the process, be prepared to learn from other people's revolutions. Learn from the enemy also. The enemy is not necessarily doing everything wrongly. You may take his right tactics and use them to your advantage. At the same time, avoid repeating the enemy's mistakes."

– Oliver Reginald Tambo (Angola, 1977)



Image: <http://www.youthvillage.co.za>

Go godisa dikgwebo tsa metsesetoropo

KA THUSO YA PUSO, Nkululeko Mbhele o godisa kgwebo ya gagwe go tswa go spaza shopo go ya go kgwebo ya suphamakete.

Albert Pule

Go tsamaisa kgwebo ke seo se leng mo mading mo go Nkululeko Mbhele. Ntatemogolo wa gagwe o ne a simolola kgwebo ya lelapa morago ga go fuduga le lelapa la gagwe go tswa kwa Ekurhuleni (East Rand) go ya Soweto.

E ne ya re e ise go ye kae ke fa spaza shopo seo se tshwarwa ke rraagwe mme morago ya nna mogoloe. E rile fa go tla nako ya gore Nkululeko a tsamaisa kgwebo eo, ke fa a e fetola go tswa go spaza shopo go nna kgwebo ya suphamakete.

One a lemoga ka bonako gore go tsamaisa suphamakete go na le dikgwetlho tsa yona. Kgwebo e ne ya gola go tswa go spaza shopo go nna le bentlele le legolo. Gareng ga dikgwetlho tse



■ Nkululeko Mbhele o dira metlae le badirammo kwa Suphamaketeng ya Emabheleni.

dingwe tse a lebaneng natso, e ne e le kgaisano le mabentlele a mangwe.

Mbhele o ne a utlwela ka letsholo la Gauteng Enterprise Propeller (GEP), Lefapha la Tlhabololo ya Ikonomi la Gauteng mmogo le Pick n Pay (PnP) le le thusang go godisa dikgwebo

tsa metsesetoropo.

Tirisanommogo eno e akaretsa gore dispaza shopo tsa metsesetoropo di reke dithoto tse di rekisiwang tsa le bentlele ka bontsi kwa PnP mme di di rekise kwa metsesetorong di dirisa sekao, mafaratlhatlha, matshwaokgwebo mmogo le ditlhotlwa

tsa PnP. Mbhele a re go dirisana mmogo le letshwaokgwebo le le itsegeng thata le le jaaka PnP go diretse kgwebo ya lapa la gaabo dikgakamatso.

“Batho ba ngokiwa ke letshwaokgwebo le legolo jaaka PnP. Ba beile ditlhotlwa mme batho ba ngokiwa ke tsona,” a rialo.

Fa e sale a dirisana le PnP, kgwebo e godile mme e dira letseno le le menaganeng gabedi go na le la pele.

“E bile re okeditse le palo ya badiri ba rona. Re ne re na le batho ba le barataro fela mme jaanong re na le ba le 14 ba ba dirang ka dinako tse di farologaneng.”

Motlhankedikhuduthamagomogolo (CEO) wa GEP Leah Manenzhe a re a ka rata go bona beng ba dispaza shopo tsa metsesetoropo ba le bantisi ba tsaya ditshono tse puso e di tlamelang

mme ba tsena mo lephateng la kgwebo e e rulaganeng.

“Ponelopele ya GEP ke go netefatsa gore Dikgwebopotlana di rotloediwa go tswa mo dikgwebong tse di sa rulaganang tse dinnye go ya go dikgwebo tse di nnelang leruri tse di nang le seabe se se bonalang mo ikonoming.

“GEP e dira le dikgwebo tsothle, go tloga kwa go tse di simololang go ya kwa dikgwebong tse di sa rulaganang le Dikgwebopotlana, tse di mo magareng le tse dikgolwana (di-SMME), dikoporasi le bagwebi ba ba eletsang go godisa dikgwebo tsa bona.

Go bona tshedimosetso ka botlalo, letsetsa GEP mo go: 011 085 2001.

Babetli ba Kapa Botlhaba ba na le le bentlele

BABETLI KWA Kapa Botlhaba ba bone tshegetso.

Siya Miti

Eastern Cape Craft Collection Store gaushwane e amogetswe ka boitumelo ke babetli mo porofenseng ka ntlha ya fa ba dumela gore e tla oketsa ditheko mme ya ba thusa go fitlhelela mmara o o batlwang ke botlhe wa bajanala.

Eastern Cape Craft Collection Store, e e thankgolotsweng ke Motlatsatona wa Tlhabololo ya Dikgwebopotlana, Elizabeth Thabathe, e bontsha ditlhasiwa tsa babetli tse di tswang go ralala Kapa Botlhaba.

Lefapha la Tlhabololo ya Dikgwebopotlana le tse nntse R1.23 milione mo le bentlele leno, le ga jaana le rekang ditlhasiwa tsa botaki tsa dikgwebo di feta 80 tsa babetli. Palo eno e tla oketsega, ga rialo Koporasitlhabololo ya Kapa Botlhaba (ECDC), e e nang le seabe sa go nna motlhokomedi.

Peeletso e e tswang ko le-

fapheng e tla dirisediwa go reka didirisiwa le go thapiwa ga motsamaisi mo ngwageng wa ntlha. Go thapilwe setlamo sa tsamaiso, se se nang le maitemogelo a mabentlele go le tsamaisa.

Dilwana tse di betlilweng ka seramiki di akaretsa tseo di betlilweng le tseo di rokilweng di tshwana le mesamo, dijana tse di apesang tafole le tsa setso mmogo le dilwana tsa fešene di tshwana le dikgetsana le dibaga. Go tla akarediwa gape le meseme, ditshamekisi, dilwana tsa le tllalo, diaparo tsa setso le tsa sešweng mmogo le dibetlwa tsa legong le tsa diterata.

“Le fa Dikgwebopotlana di na le bokgoni jwa go godisa ikonomi, seno ga se itiragalele fela. Ke tiro ya togamaano ya tshegetso ya Dikgwebopotlana e e farologaneng, e e totileng lephata mme e lebeletse kgolo go samagana le dikgoreletsi tse di dirang gore dikgwebopotlana



■ Tse dingwe tsa dilwana tsa botaki tse di bontshiwang kwa Eastern Cape Craft Collection Store.

na di retelelwe ke go atlega,” go buile Motlatsatona Thabathe.

O tlhomamisitse gore mo dikgwebong di le 80 tse di tlhopilweng, 80% ya tsona ke tsa basadi, 95% ke tsa bantsho mme 30% ke tsa bašwa fela. Go le jalo, 65% ya tsona ke tsa kwa ditropong tsa kwa metseselegaeng le kwa metseng ya kwa magaeng fa

30% e le tsa kwa dikarolong tsa ditropong tse dikgolo.

Motsadi wa bana ba babedi, Joyce Kelele, yo a ntseng a dira dibaga le dituku tse di kgabisitsweng ka dibaga fa e sale ka ngwaga wa 2000, a re le bentlele la dilwana tsa botaki le tla mo thusa go fitlhelela mmara.

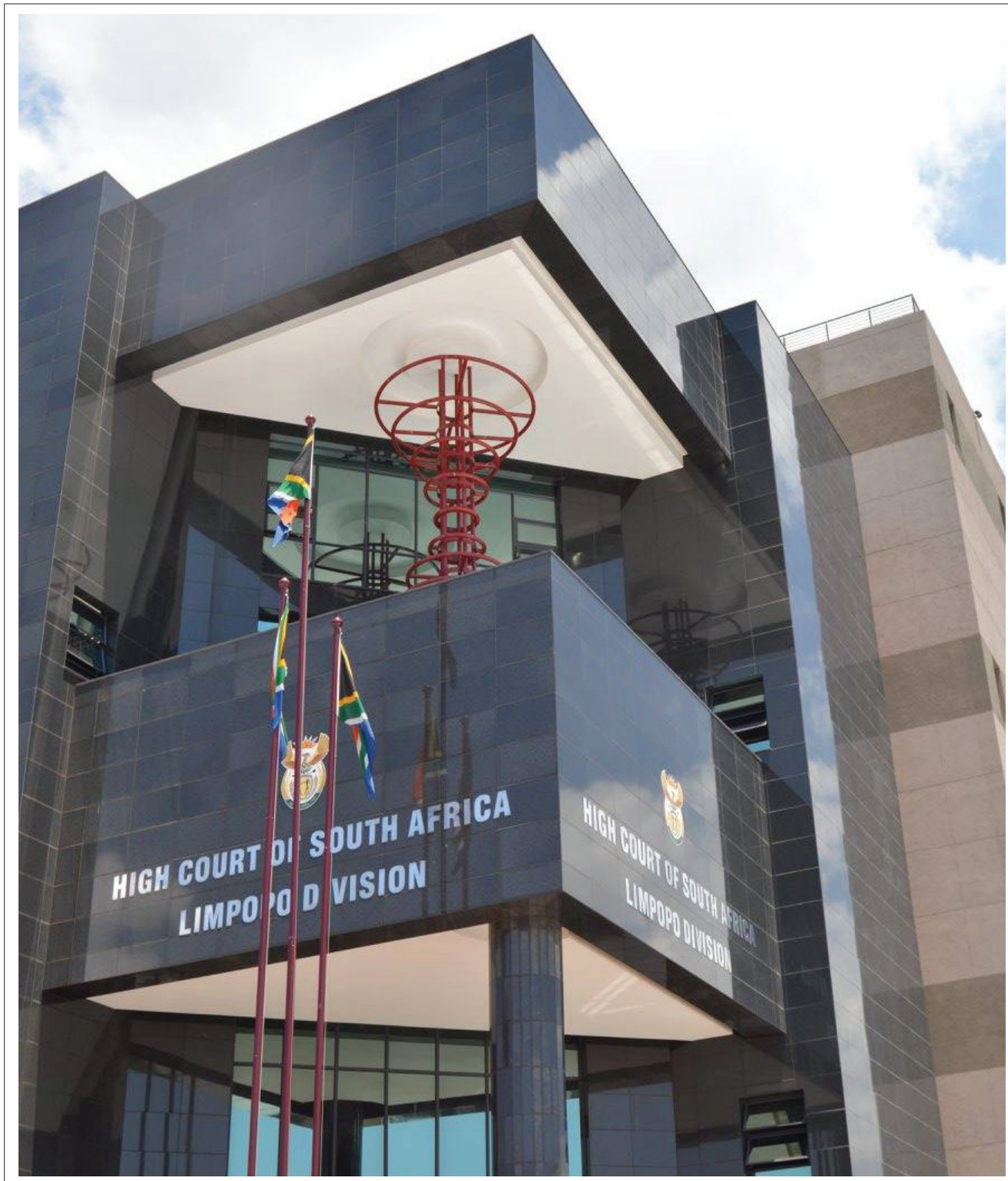
“Tiro ya go roka ka dibaga le go roka ke yona e ntseng

e ntlhokometse mo dingwageng di le 16. Ke setse ke kile ka ya Decorex le kwa Rand Easter Show, ka ditebogo go ECDC le Lekgotlatoropo la Buffalo City.

“Dipontsho tseno di re thusa go tokafatsa thekiso ya rona gonne re boa re tshotse diotara mme re solofetse go oketsa letseno.”

Phitlhelelo ya bosiamisi go botlhe

BAAGI BA LIMPOPO ba fitlhelela bosiamisi ka bonako le bonolo.



Noluthando Motswai

Kgotlatshekelo e e sa lokgolo e e sa tswang go bu-lwa ya Polokwane e na le karolo e ntshwa e e lebeletseng merero ya badiri ka ditebogo go Kantoro ya Moatlhodimogolo.

Kgotlatshekelo ya Badiri le Boikuelo jwa Badiri e goleditswe ke Moporesitente mme e dira jaaka kgotlatshekelo e e kgethegileng e e samaganang le dikgotlhang tsa badiri.

Sebueledi sa Baatlhodi ba Aforika Borwa, Nathi Mncube a re ga go na dituediso dipe gore o fitlhelele kgotlatshekelo kwa ntle ga

fa fela o thapile babueledi ba ba duedisang ditirelo tsa bona.

O rile mo malobeng dikopo di ne di dirwa kwa Kgotlatshekelong ya kwa Braamfontein, Johannesburg.

“Go tlhomiwa ga lekala la kwa Polokwane ke karolo ya maiteko a a tswelolang pele a go netefatsa gore ma-Aforika Borwa otlhe a fitlhelela bosiamisi,” Mncube o ne a rialo.

O tlaleditse ka gore lekala la Limpopo la kgotlatshekelo ya badiri le tla dira go tshwana fela le kantoro ya Braamfontein le Makala a kwa Moptsekapa, Port Elizabeth le Durban.

“Kgotlatshekelo ya Badiri e na le taolo ya diporofense tsothle di le robongwe mme ka jalo ditiro tsa kgotlatshekelo di ka dirwa kwa lefelong lengwe le lengwe. Fa go na le tlhokego ya go ya kwa diporofenseng tse dingwe, go dirwa dithulaganyo le dikgotlatshekelo tse di maleba gore di thuse.”

Go tlhomilwe dikantoro tsa sathalaete tsa kgotlatshekelo kwa KwaZulu-Natal, Kapa Bophirima le Kapa Botlhaba. Kantoro ya Moatlhodimogolo e okeditse bokgoni jwa tsamaiso jwa diporofense tseno go netefatsa gore Baatlhodi ba nna

le tshegetso e e lekaneng.

Kgotlatshekelo ya Badiri e na le taolo ya go athola dikgetse tse di fetisitsweng ke Lekgotla la Thuanyo le Tsereganyo le Katlholelo (CCMA), Makgotla a dipuisano kwa ditirong le bangongoregi le bona ba ka fitlhelela Kgotlatshekelo ka tlhamalalo, mme seno se akaretsa le boikuelo jo bo tswang kwa ditheetsong tsa Kgotlatshekelo ya Badiri.

Go thapilwe baatlhodi ba le 10 mo Kgaolong eno. Go thapiwa baatlhodi ba nakwana gangwe le gape go samagana le dikgetse ka paka ya go ikhutsa. ■



OFFICE OF THE CHIEF JUSTICE
REPUBLIC OF SOUTH AFRICA

Ditlhogo tsa Dikgotlatshekelo ke bomang?

Lereo la “Ditlhogo tsa Dikgotlatshekelo” le kaya boeteledipele jotlhe jwa Baatlhodi mo nageng. Tota, Ditlhogo tsa Dikgotlatshekelo di dirwa ke Moatlhodimogolo jaaka Tlhogo ya Kgotlatshekelo ya Molaotheo; Moporesitente wa Kgotlatshekelo kgolo ya Boikuelo; Motlatsamoporesitente wa Kgotlatshekelo kgolo ya Boikuelo mo maemong a gagwe jaaka Tlhogo ya Kgotlatshekelo ya Ditlhopho; Baatlhodibaporesitente ba dikarolo tse di farologaneng tsa Kgotlatshekelo kgolo le Dikgotlatshekelo tsa seemo se se lekanang le yona go tshwana le Kgotlatshekelo ya Badiri le Kgotlatshekelo ya Ditleleimi tsa Mafatshe.

Moatlhodimogolo wa Rephaboliki ya Aforika Borwa ke mang?

Motlotlegi Mogoeng Mogoeng.



Motlatsamoatlhodimogolo wa Rephaboliki ya Aforika Borwa ke mang?

Motlotlegi Bess Nkabinde, Motlatsamoatlhodimogolo wa nakwana.

Ke mang yo a thapang Moatlhodimogolo le Motlatsamoatlhodimogolo?

Go ya ka Karolo ya 174 (3) ya Molaotheo wa Rephaboliki ya Aforika Borwa, Moporesitente, jaaka tlhogo ya khuduthamaga ya bosetshaba, morago ga go buisana le Khomišene ya Tirelo ya Bosiamisi le baeteledipele ba makoko a a nang le kemedi mo Kokoanopeomolaong ya Bosetshaba, o thapa Moatlhodimogolo le Motlatsamoatlhodimogolo mme, morago ga go buisana le Khomišene ya Tirelo ya Bosiamisi, o thapa Moporesitente le Motlatsamoporesitente wa Kgotlatshekelo kgolo ya Boikuelo.

Pharologano magareng ga baatlhodi le bomagiseterata ke eng?

Moatlhodi ke motlhankedi yo o laolang Kgotlatshekelo e Kgolo mme magiseterata o laola merero kwa Kgotlatshekelong ya magiseterata ya Tikologo gongwe ya Kgaolo.

Ke mang yo a thapang bomagiseterata?

Tona ya Bosiamisi le Tlhabololo ya Molaotheo, ka kgakololo ya Khomišene ya Bomagiseterata, o thapa bomagiseterata.